

Selecting Your Perfect Universities



Definition of "Your Perfect Universities"

- ◆ Your Perfect Universities = Perfect for You.
- ◆ They are the campuses that have the resources and environment that most support you in achieving your unique educational/life goals.
- ◆ There is no ideal "perfect university", no one size fits all that meets the needs of every student, but there are perfect universities for you.

Formula for Making “Good” Decisions

**Information + Experience +
Evaluation + Trusting Yourself =**

Good Decisions



Two Key Factors

- ◆ Gathering and Evaluating Information

- ◆ Using your Head and your Heart



Always Remember....

- ◆ It's a process not a one-time activity.
- ◆ Your choices and decisions are subject to change as you learn new information and as you have more experience.
- ◆ The better you know yourself the more authentic your decisions will be.

◆ Wisdom =



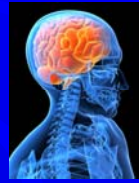
Gathering & Evaluating Information



Use your head to:

- Research websites and other resources to collect and record data
- Compare and analyze the data you collect
- Draw conclusions from facts

Examples of Questions



- ◆ Does the university offer my major?
- ◆ What are the transfer admissions requirements (GPA? number of transferable units? specific coursework? audition or portfolio?)
- ◆ Are good educational support facilities available (libraries, computers)?
- ◆ What are the costs per academic year?
- ◆ What financial aid packages and scholarships are available?
- ◆ Can I work while I'm in school? If so, how many hours a week?
- ◆ Does the institution have evening courses?
- ◆ Does the institution allow part-time study?
- ◆ What is the size of the institution?
- ◆ What types of housing are available and what are the average costs?
- ◆ Does the campus have Family Student housing? Child care services?
- ◆ What are the academic support services available to me?
- ◆ What is the average size of upper division classes in my major?
- ◆ What internships/research opportunities are available?
- ◆ Have recent graduates been admitted to the professional/graduate schools I want to attend?
- ◆ What companies come to campus to hire students after graduation?

Gathering & Evaluating Information



Use your heart to:

- Be aware of what motivates you
- Know your preferences (likes and dislikes)
- Be aware of your responses to different environments and experiences
- Base decisions on your values (what's important to you)

Examples of Questions

- ✦ What type of environment do I most enjoy? Big city? Medium size city? Small city? Forget about the cities, I want to be surrounded by nature? North, South, East, West? Mountains? Ocean? Desert?
- ✦ How far away do I want to be from home?
- ✦ What size campus will I be the most comfortable and still be challenged?
- ✦ Do I want to be on a campus where everyone knows me? A lot of people know me? Some people know me, most don't?
- ✦ What's the ideal class size for me where I perform at my best?
- ✦ Would the campus environment suit me? Do I find it stimulating? Do I think it's ugly? Is it scary? Or just right?
- ✦ How important is ethnic diversity to me?
- ✦ What do I enjoy doing when I'm not studying? Athletics? Participating in student clubs/government? Working? Spending time with family and friends?
- ✦ Does the college/university have activities I'm interested in?
- ✦ What subjects do I enjoy studying?
- ✦ What motivates and inspires me?
- ✦ How important is this particular fact to me?

Questions and Answers

- ◆ Questioning is a part of the process.
- ◆ The answers/information you collect are only as good as the questions that you ask.

Tools and Resources

◆ My Perfect Universities Workbook

– Available at www.sbcc.edu/transfcenter

– Click on Events/Workshop Materials on left

– A tool you can use for your process of selecting your perfect universities

More Tools & Resources

For Researching Universities

- ◆ www.collegeboard.com has the College Quickfinder that has many of the same tools as CaliforniaColleges.edu but includes information about all U.S. universities
- ◆ www.collegesource.org allows you to read campus profiles and college catalogs. (You can access it at any computer on the SBCC campus.)
- ◆ www.CaliforniaColleges.edu contains information about all California colleges and has the following tools:
 - Matching Assistant - Find campuses that meet your specific requirements
 - Distance Search - Find the campus closest to any zip code
 - Comparative View - Compare colleges and universities in California
 - Key Facts - Obtain a brief overview of participating campuses Campus Tours
- ◆ www.csumentor.edu allows you to search and compare CSU campuses
- ◆ www.universityofcalifornia.edu/apply provides information about all the UC campuses including direct links to each campus' website
- ◆ www.uctransfer.org information on UC Transfer Admission Guarantees (TAGS), transfer planning, costs, etc.
- ◆ www.aiccu.edu provides an on-line guidebook for California Private/Independent colleges and universities

More Tools & Resources

For Researching Universities

- ✦ www.hbcu-central.com provides information on Historically Black Colleges and Universities
- ✦ www.ed.gov/offices/OIIA/Hispanic/hsi/hsi9798/hsitable.html List of Hispanic Serving Institutions by state with links to each college/university
- ✦ www.kstrom.net/isk/schools/schools.html provides information about Tribal Colleges
- ✦ www.dot.gov/ost/docr/msi/main.html is a good resource on Minority Serving Institutions

More Tools & Resources

For Researching Universities

- ◆ www.sbcc.edu/transfercenter
 - Speak with College and university representatives visiting SBCC on "Transfer Day" each Fall and/or
 - Make appointments to meet with visiting university/college representatives sponsored by the Transfer Center during the academic year
 - Attend Transfer Center Workshops on specific universities
 - Meet with a transfer advisor in the Transfer Center
- ◆ **Visit colleges/universities** and go on campus tour, sit in on classes, speak with current students
- ◆ **Email/phone/visit the university admissions office**

More Tools & Resources

Explore Careers/Majors

- ✦ www.eureka.org Nationwide (At Create Account prompt: type VUOHNDU)
- ✦ www.assist.org for UC & CSU
- ✦ www.collegesource.org for university catalogs
- ✦ **Email/phone/visit/website of the academic/major department** of the actual college/university
- ✦ **Email/phone/visit/website of the Career Center** of the actual college/university
- ✦ **Visit SBCC Career Center** and their website www.sbcc.edu/careercenter/

General Assistance

- ✦ **SBCC Counselors & Advisors** – Academic Counseling Center, EOPS, Transfer Academy (TAGS)

Transfer Center Drop-In Advising Hours

SS 140

Now thru October 31st

Mon: 10am-1-pm & 3-5pm

Tues: 10am-1-pm & 3-5pm

Wed: 10am-1-pm & 3-5pm

Thur: 10am-1-pm & 2-4 pm

November 3rd – December 19th

Mon: 10am-1-pm & 3-5pm

Tues: 10am-1-pm & 3-5pm

Wed: 10am - 5pm

Thur: 8:30am-4 pm

Fri: 8:30am – 12pm